

WHAT GOES WHERE?

LEVEL 1 INSTRUCTIONS – Recommended for Grades 3-4



GAME PIECES: 22 Cards, 2 Sorting Bins

OBJECT: Reduce the amount of waste you have to send to the landfill by accurately sorting out items accepted in RI's mixed recycling program.

PREPARATION:

- Cut out cards along dotted lines.
- Cut out sorting bins, cutting **ONLY** along all solid lines.
 - Fold along dotted lines.
 - Fold into a bin shape and tape side tabs.

PLAY:

STEP 1:

- Shuffle the cards and place them face down.

STEP 2: SORT MIXED RECYCLABLES

- Place the RECYCLING BIN in the center of the activity area.
- Review the SORTING GUIDELINES for MIXED RECYCLING.
- One at a time, flip over a card and decide if it meets Rhode Island's recycling guidelines. State why it does or does not meet them. If it does, place the card in the RECYCLING BIN.
- Place the remaining cards in the TRASH BIN.

STEP 3: CHECK YOUR ANSWERS

- Check the ANSWER KEY to see if the items in the RECYCLING and TRASH bins are sorted correctly.

STEP 4: DISCUSSION

- Of the 22 items you sorted, how many can go in the recycling instead of the trash?
- Did you find any items that your family usually places in the trash that could go in the recycling bin instead?
- Look in the trash and/or recycling bins in your classroom or in your school.
 - Are there any items in the trash that should go in the recycling?
 - Are there any items in the recycling that should go in the trash?

INTENTIONALLY LEFT BLANK

WHAT GOES WHERE? LEVEL 1 SORTING GUIDELINES

Recycling right reduces the amount of trash that must be buried in Rhode Island's landfill. Follow these guidelines to accurately sort out items accepted in RI's mixed recycling program and place them in the RECYCLING BIN instead of the TRASH BIN.

MIXED RECYCLING	Place these items in the RECYCLNG BIN: Fiber: Paper, cardboard (flattened) and cartons ONLY <ul style="list-style-type: none">• <i>Exceptions: No paper shreds, napkins, tissues, or paper towels</i> Metal: Cans, lids, and foil ONLY Glass: Bottles and jars ONLY Plastic: Containers ONLY <ul style="list-style-type: none">• <i>Exceptions: No foam containers and no containers from flammable materials or oily chemicals</i>
------------------------	---

After completing the game, see the ANSWER KEY to find out if you've sorted the cards correctly.

INTENTIONALLY LEFT BLANK

WHAT GOES WHERE? LEVEL 1 ANSWER KEY

BINS	CARDS
TRASH	
MIXED RECYCLING	

INTENTIONALLY LEFT BLANK



WHAT GOES WHERE?

¿A DÓNDE VA?

www.rirrc.org



WHAT GOES WHERE?

¿A DÓNDE VA?

www.rirrc.org



WHAT GOES WHERE?

¿A DÓNDE VA?

www.rirrc.org



WHAT GOES WHERE?

¿A DÓNDE VA?

www.rirrc.org



WHAT GOES WHERE?

¿A DÓNDE VA?

www.rirrc.org



WHAT GOES WHERE?

¿A DÓNDE VA?

www.rirrc.org



WHAT GOES WHERE?

¿A DÓNDE VA?

www.rirrc.org



WHAT GOES WHERE?

¿A DÓNDE VA?

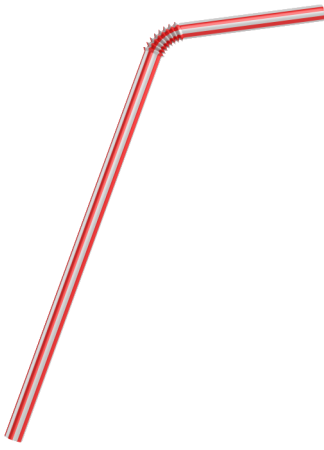
www.rirrc.org



WHAT GOES WHERE?

¿A DÓNDE VA?

www.rirrc.org



plastic straw

pajita plástica / sorbete plástico



wrappers

envoltorios / envolturas



plastic utensils

utensilios plásticos



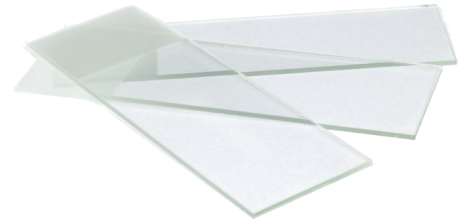
foam cup

vaso de espuma



motor oil bottle

botella de aceite para motor



microscope slides

diapositivas para microscopio



wooden box

caja de madera



paper

papel



cardboard

cartón



WHAT GOES WHERE?

¿A DÓNDE VA?

www.rirrc.org



WHAT GOES WHERE?

¿A DÓNDE VA?

www.rirrc.org



WHAT GOES WHERE?

¿A DÓNDE VA?

www.rirrc.org



WHAT GOES WHERE?

¿A DÓNDE VA?

www.rirrc.org



WHAT GOES WHERE?

¿A DÓNDE VA?

www.rirrc.org



WHAT GOES WHERE?

¿A DÓNDE VA?

www.rirrc.org



WHAT GOES WHERE?

¿A DÓNDE VA?

www.rirrc.org



WHAT GOES WHERE?

¿A DÓNDE VA?

www.rirrc.org



WHAT GOES WHERE?

¿A DÓNDE VA?

www.rirrc.org



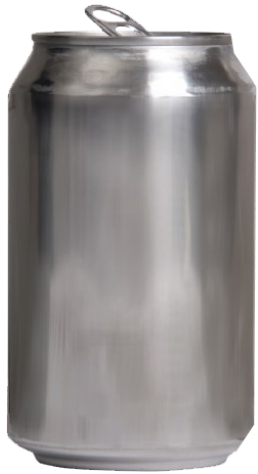
soup carton
cartón de sopa



milk carton
cartón de leche



juice box
cartón de jugo



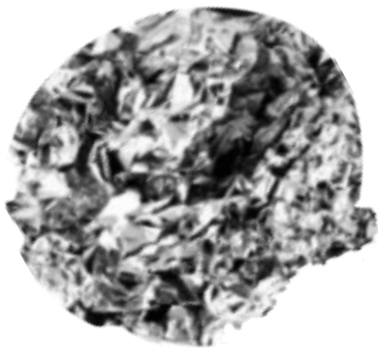
beverage can
lata de bebida



food can
lata de comida



metal lid
tapa de metal



aluminum foil
papel aluminio



juice bottle
botella de jugo



shampoo bottle
botella de champú



WHAT GOES WHERE?

¿A DÓNDE VA?

www.rirrc.org



WHAT GOES WHERE?

¿A DÓNDE VA?

www.rirrc.org



WHAT GOES WHERE?

¿A DÓNDE VA?

www.rirrc.org



WHAT GOES WHERE?

¿A DÓNDE VA?

www.rirrc.org



WHAT GOES WHERE?

¿A DÓNDE VA?

www.rirrc.org



WHAT GOES WHERE?

¿A DÓNDE VA?

www.rirrc.org



WHAT GOES WHERE?

¿A DÓNDE VA?

www.rirrc.org



WHAT GOES WHERE?

¿A DÓNDE VA?

www.rirrc.org



WHAT GOES WHERE?

¿A DÓNDE VA?

www.rirrc.org



water bottle
botella de agua



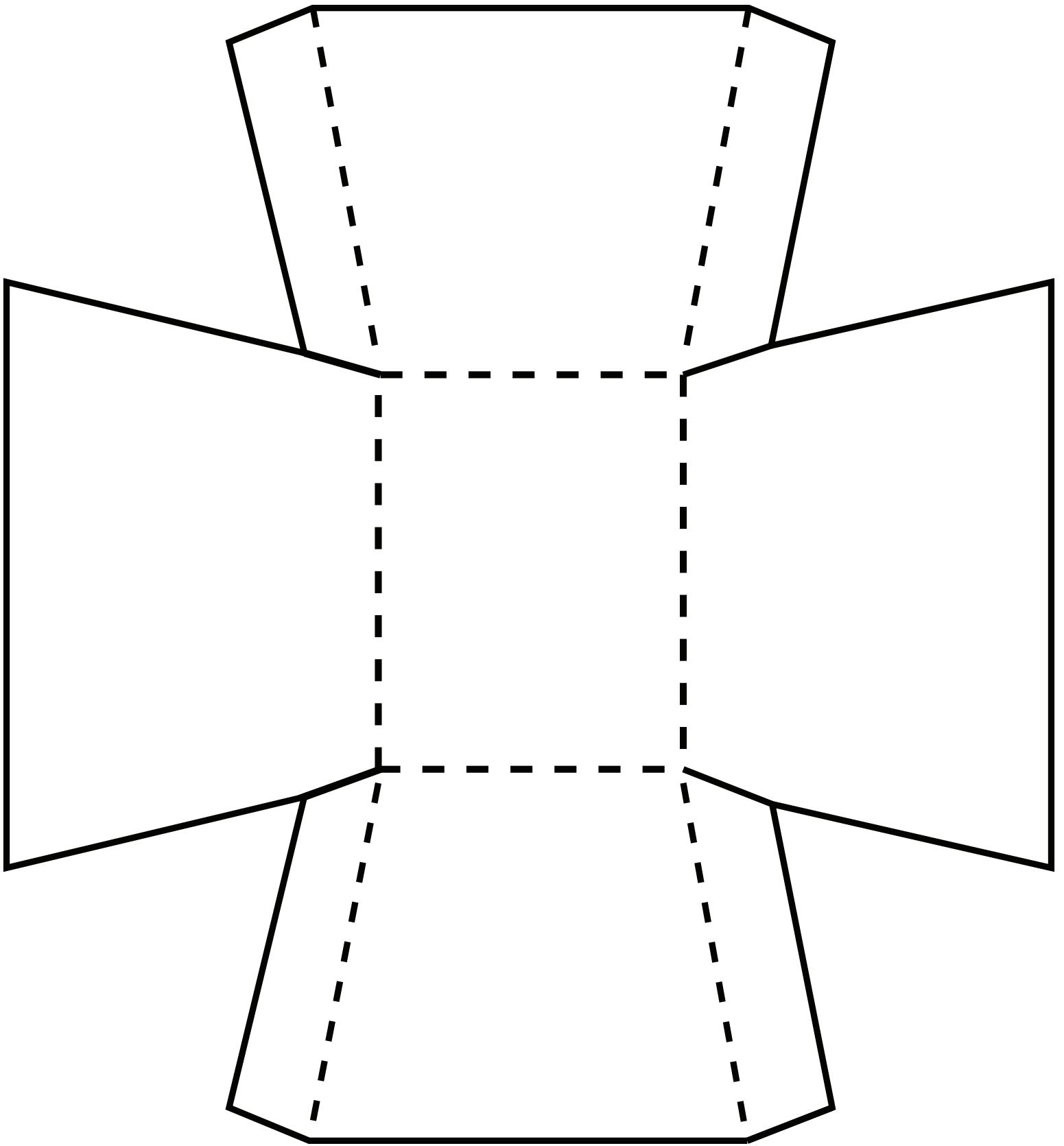
yogurt cup
vaso de yogur



plastic take-out container
contenedor plástico para
comida de llevar



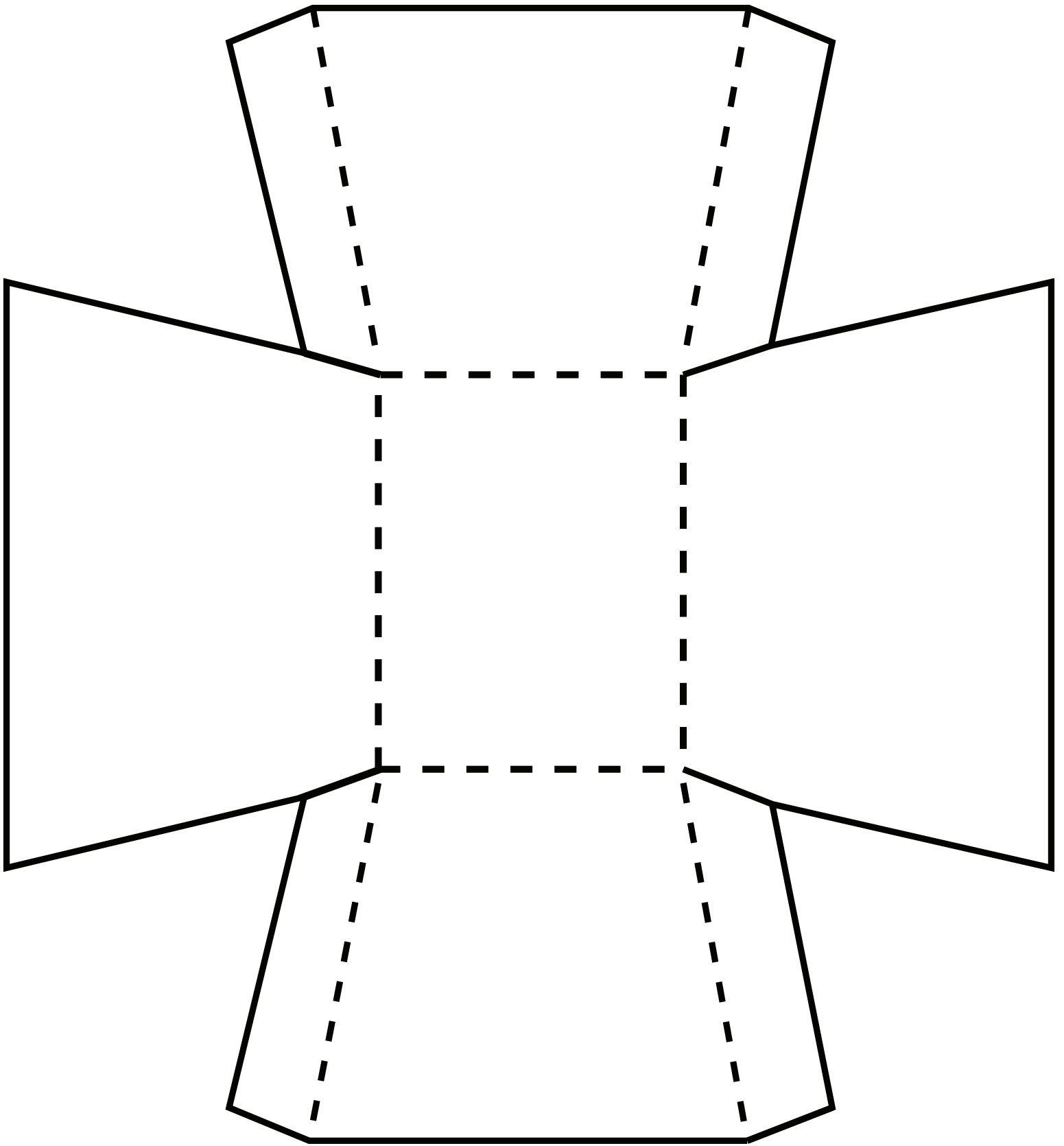
iced coffee cup
vaso para café frío





TRASH
BASURA

TRASH BIN
CONTENEDOR DE
BASURA



**MIXED
RECYCLING**
RECICLAJE MEZCLADO

**RECYCLING
BIN**
CONTENEDOR
DE RECICLAJE
MEZCLADO