

WHAT GOES WHERE?



LEVEL 2 INSTRUCTIONS – Recommended for Grades 5-6

GAME PIECES: 33 Cards, 4 Sorting Bins

OBJECT: Reduce the amount of waste you have to send to the landfill by accurately sorting out items accepted in RI's (1) mixed recycling, (2) hazardous waste, and (3) plastic bag and film programs.

PREPARATION:

- Cut out cards along dotted lines.
- Cut out sorting bins, cutting **ONLY** along all solid lines.
 - Fold along dotted lines.
 - Fold into a bin shape and tape side tabs.

PLAY:

STEP 1:

- Shuffle the cards and place them face down.

STEP 2: SORT MIXED RECYCLABLES

- Place the RECYCLING BIN in the center of the activity area.
- Review the SORTING GUIDELINES for MIXED RECYCLING.
- One at a time, flip over a card and decide if it meets Rhode Island's recycling guidelines. State why it does or does not meet them. If it does, place the card in the RECYCLING BIN.

STEP 3: SORT HAZARDOUS WASTE

- Place the ECO-DEPOT COLLECTION bin in the center of the activity area.
- Review the SORTING GUIDELINES for HAZARDOUS WASTE.
- One at a time, flip over a card and decide if it meets Rhode Island's household hazardous waste guidelines. State why it does or does not meet them. If it does, place the card in the ECO-DEPOT COLLECTION bin.

STEP 4: SORT PLASTIC BAGS AND FILM

- Place the TAKE BACK TO ANY LARGE RI STORE bin in the center of the activity area.
- Review the SORTING GUIDELINES for PLASTIC BAGS AND FILM.
- One at a time, flip over a card and decide if it meets Rhode Island's plastic bag and film guidelines. State why it does or does not meet them. If it does, place the card in the TAKE BACK TO ANY LARGE RI STORE bin.
- Place the remaining cards in the TRASH BIN.

STEP 5: CHECK YOUR ANSWERS

- Check the ANSWER KEY to see if the items in the RECYCLING BIN, ECO-DEPOT COLLECTION bin, TAKE BACK TO ANY LARGE RI STORE bin, and TRASH BIN are sorted correctly.

STEP 6: DISCUSSION

- What percentage of the items you sorted don't need to go in the trash?
- Did you find any items that your family usually places in the trash that could go elsewhere?
- Look in the trash and/or recycling bins in your classroom or in your school.
 - Are there any items in the trash that should go in the recycling?
 - Are there any items in the recycling that should go in the trash?
- What do you think the effect of putting items in the correct bins, instead of just putting them all in the trash bin, could have on the landfill?
- What do you think the effect of putting items in the wrong bins could have? For example, what do you think happens at the Materials Recycling Facility (MRF) when you put items in the recycling bin that don't belong there?

WHAT GOES WHERE? LEVEL 2 SORTING GUIDELINES

Recycling right and setting aside other items for special collection programs reduces the amount of trash that must be buried in Rhode Island's landfill. Follow these guidelines to accurately sort out items accepted in RI's (1) mixed recycling, (2) hazardous waste, and (3) plastic bag and film programs, and place them in the correct bins instead of the TRASH BIN.

<p>MIXED RECYCLING</p>	<p>Place these items in the RECYCLNG BIN:</p> <p>Fiber: Paper, cardboard (flattened) and cartons ONLY</p> <ul style="list-style-type: none"> • <i>Exceptions: No paper shreds, napkins, tissues, or paper towels</i> <p>Metal: Cans, lids, and foil ONLY</p> <p>Glass: Bottles and jars ONLY</p> <p>Plastic: Containers ONLY</p> <ul style="list-style-type: none"> • <i>Exceptions: No foam containers and no containers from flammable materials or oily chemicals</i>
<p>HAZARDOUS WASTE</p>	<p>Bring these items to an ECO-DEPOT COLLECTION event:</p> <p>Anything that is flammable, combustible, corrosive, toxic, or poisonous</p>
<p>PLASTIC BAGS AND FILM</p>	<p>Collect these items to TAKE BACK TO ANY LARGE RI STORE:</p> <p>Clean and dry bags and film that can stretch (even just a little!)</p>

After completing the game, see the ANSWER KEY to find out if you've sorted the cards correctly.

INTENTIONALLY LEFT BLANK

WHAT GOES WHERE? LEVEL 2 ANSWER KEY

BINS	CARDS
TRASH	
MIXED RECYCLING	
HAZARDOUS WASTE	
PLASTIC BAGS AND FILM	

INTENTIONALLY LEFT BLANK



WHAT GOES WHERE?

¿A DÓNDE VA?

www.rirrc.org



WHAT GOES WHERE?

¿A DÓNDE VA?

www.rirrc.org



WHAT GOES WHERE?

¿A DÓNDE VA?

www.rirrc.org



WHAT GOES WHERE?

¿A DÓNDE VA?

www.rirrc.org



WHAT GOES WHERE?

¿A DÓNDE VA?

www.rirrc.org



WHAT GOES WHERE?

¿A DÓNDE VA?

www.rirrc.org



WHAT GOES WHERE?

¿A DÓNDE VA?

www.rirrc.org



WHAT GOES WHERE?

¿A DÓNDE VA?

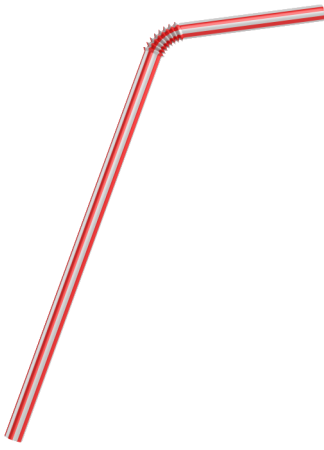
www.rirrc.org



WHAT GOES WHERE?

¿A DÓNDE VA?

www.rirrc.org



plastic straw

pajita plástica / sorbete plástico



wrappers

envoltorios / envolturas



plastic utensils

utensilios plásticos



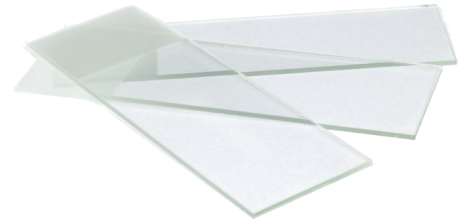
foam cup

vaso de espuma



motor oil bottle

botella de aceite para motor



microscope slides

diapositivas para microscopio



wooden box

caja de madera



paper

papel



cardboard

cartón



WHAT GOES WHERE?

¿A DÓNDE VA?

www.rirrc.org



WHAT GOES WHERE?

¿A DÓNDE VA?

www.rirrc.org



WHAT GOES WHERE?

¿A DÓNDE VA?

www.rirrc.org



WHAT GOES WHERE?

¿A DÓNDE VA?

www.rirrc.org



WHAT GOES WHERE?

¿A DÓNDE VA?

www.rirrc.org



WHAT GOES WHERE?

¿A DÓNDE VA?

www.rirrc.org



WHAT GOES WHERE?

¿A DÓNDE VA?

www.rirrc.org



WHAT GOES WHERE?

¿A DÓNDE VA?

www.rirrc.org



WHAT GOES WHERE?

¿A DÓNDE VA?

www.rirrc.org



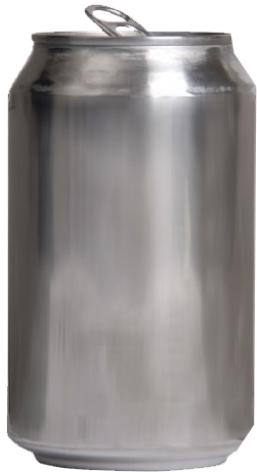
soup carton
cartón de sopa



milk carton
cartón de leche



juice box
cartón de jugo



beverage can
lata de bebida



food can
lata de comida



metal lid
tapa de metal



aluminum foil
papel aluminio



juice bottle
botella de jugo



shampoo bottle
botella de champú



WHAT GOES WHERE?

¿A DÓNDE VA?

www.rirrc.org



WHAT GOES WHERE?

¿A DÓNDE VA?

www.rirrc.org



WHAT GOES WHERE?

¿A DÓNDE VA?

www.rirrc.org



WHAT GOES WHERE?

¿A DÓNDE VA?

www.rirrc.org



WHAT GOES WHERE?

¿A DÓNDE VA?

www.rirrc.org



WHAT GOES WHERE?

¿A DÓNDE VA?

www.rirrc.org



WHAT GOES WHERE?

¿A DÓNDE VA?

www.rirrc.org



WHAT GOES WHERE?

¿A DÓNDE VA?

www.rirrc.org



WHAT GOES WHERE?

¿A DÓNDE VA?

www.rirrc.org



water bottle
botella de agua



yogurt cup
vaso de yogur



plastic take-out container
contenedor plástico para
comida de llevar



iced coffee cup
vaso para café frío



bug spray
repelente del insecto



bleach
blanqueador / cloro



poison
veneno



nail polish
esmalte para las uñas



gasoline
gasolina



WHAT GOES WHERE?

¿A DÓNDE VA?

www.rirrc.org



WHAT GOES WHERE?

¿A DÓNDE VA?

www.rirrc.org



WHAT GOES WHERE?

¿A DÓNDE VA?

www.rirrc.org



WHAT GOES WHERE?

¿A DÓNDE VA?

www.rirrc.org



WHAT GOES WHERE?

¿A DÓNDE VA?

www.rirrc.org



WHAT GOES WHERE?

¿A DÓNDE VA?

www.rirrc.org



WHAT GOES WHERE?

¿A DÓNDE VA?

www.rirrc.org



WHAT GOES WHERE?

¿A DÓNDE VA?

www.rirrc.org



WHAT GOES WHERE?

¿A DÓNDE VA?

www.rirrc.org



bubble wrap
plástico de burbujas



air packs
bolsas de aire



plastic envelope
envoltura de plástico



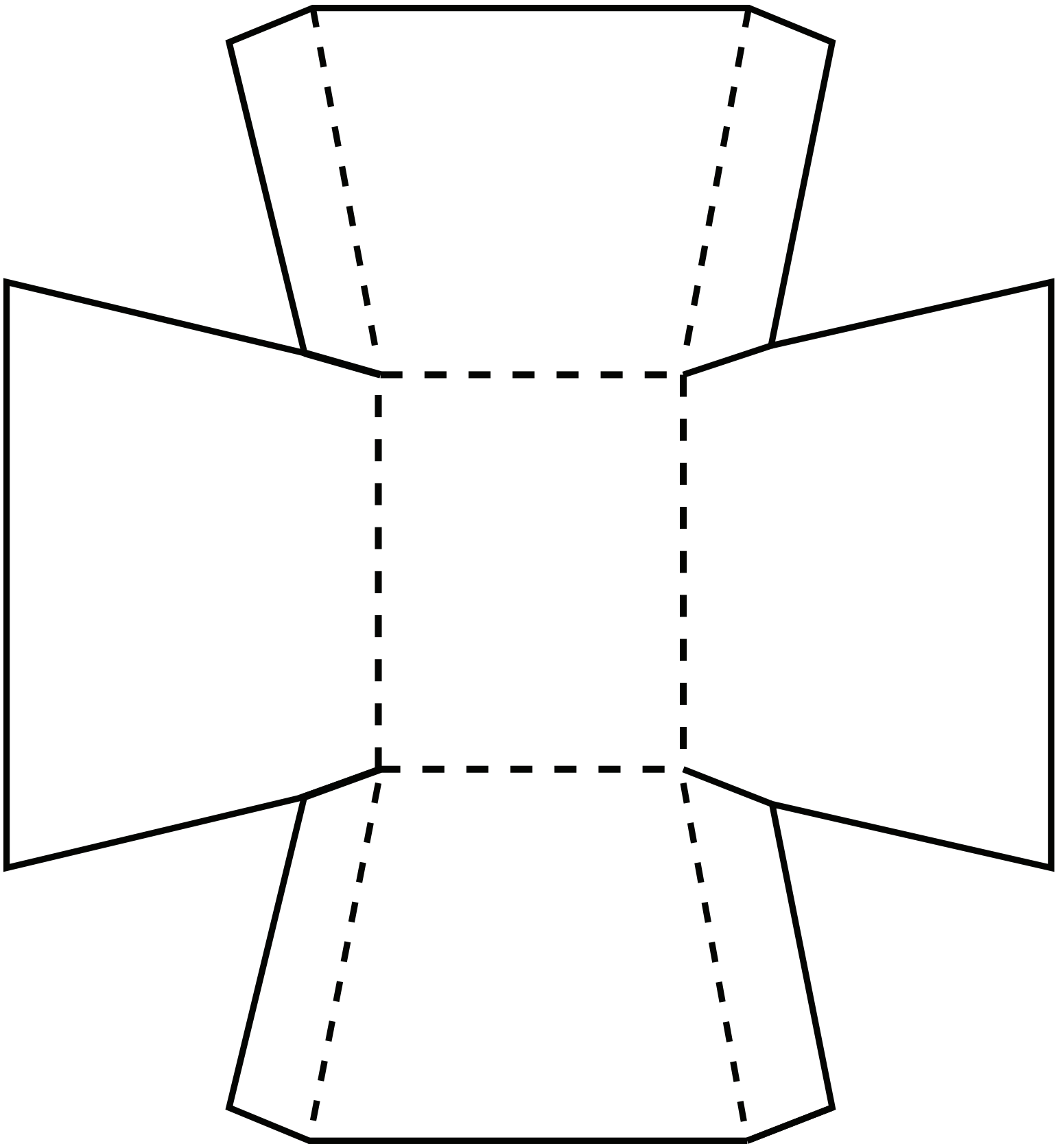
sandwich bag
bolsa para sándwich



produce bag
bolsa para verduras y frutas



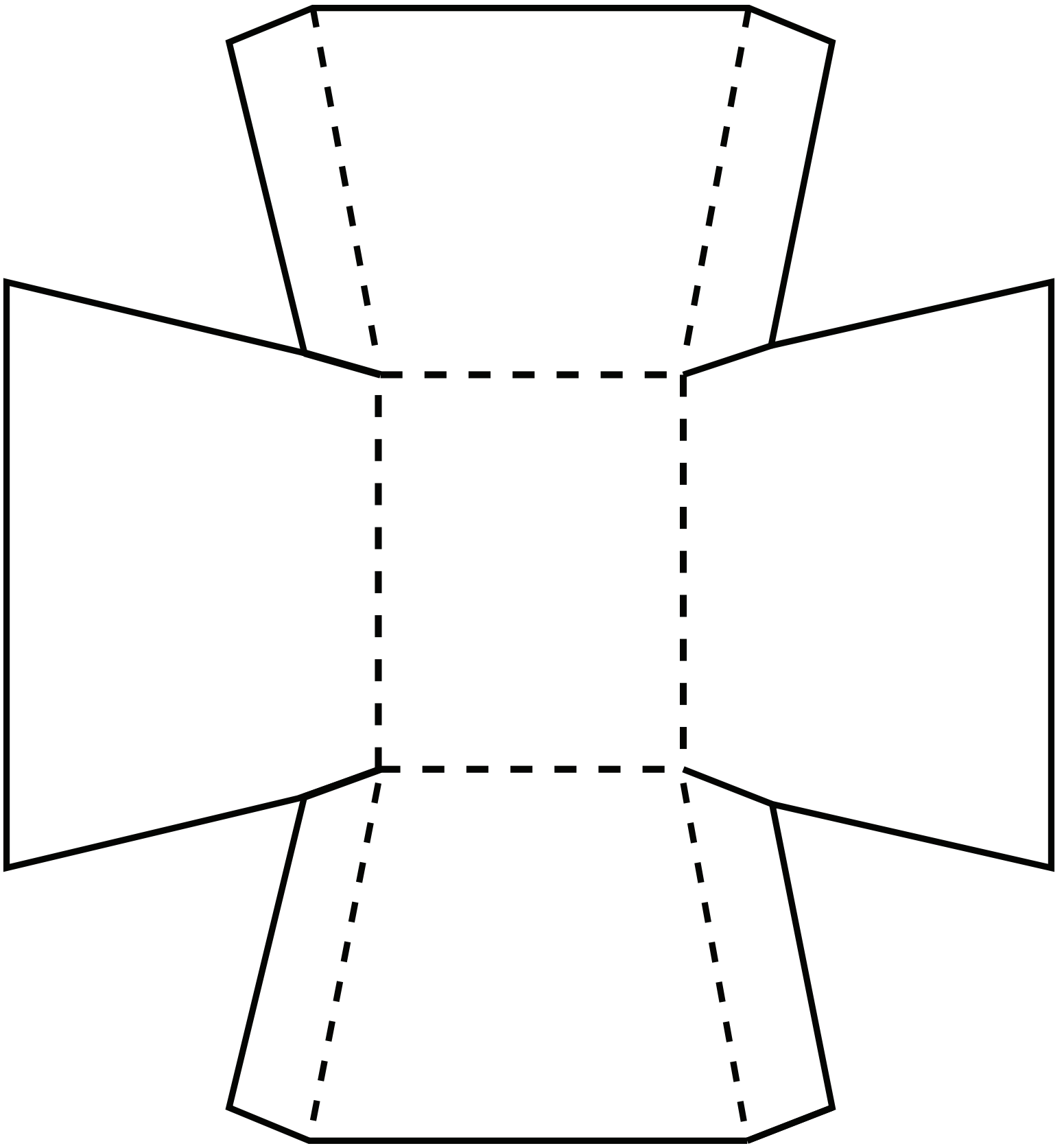
plastic bag
bolsa plástica





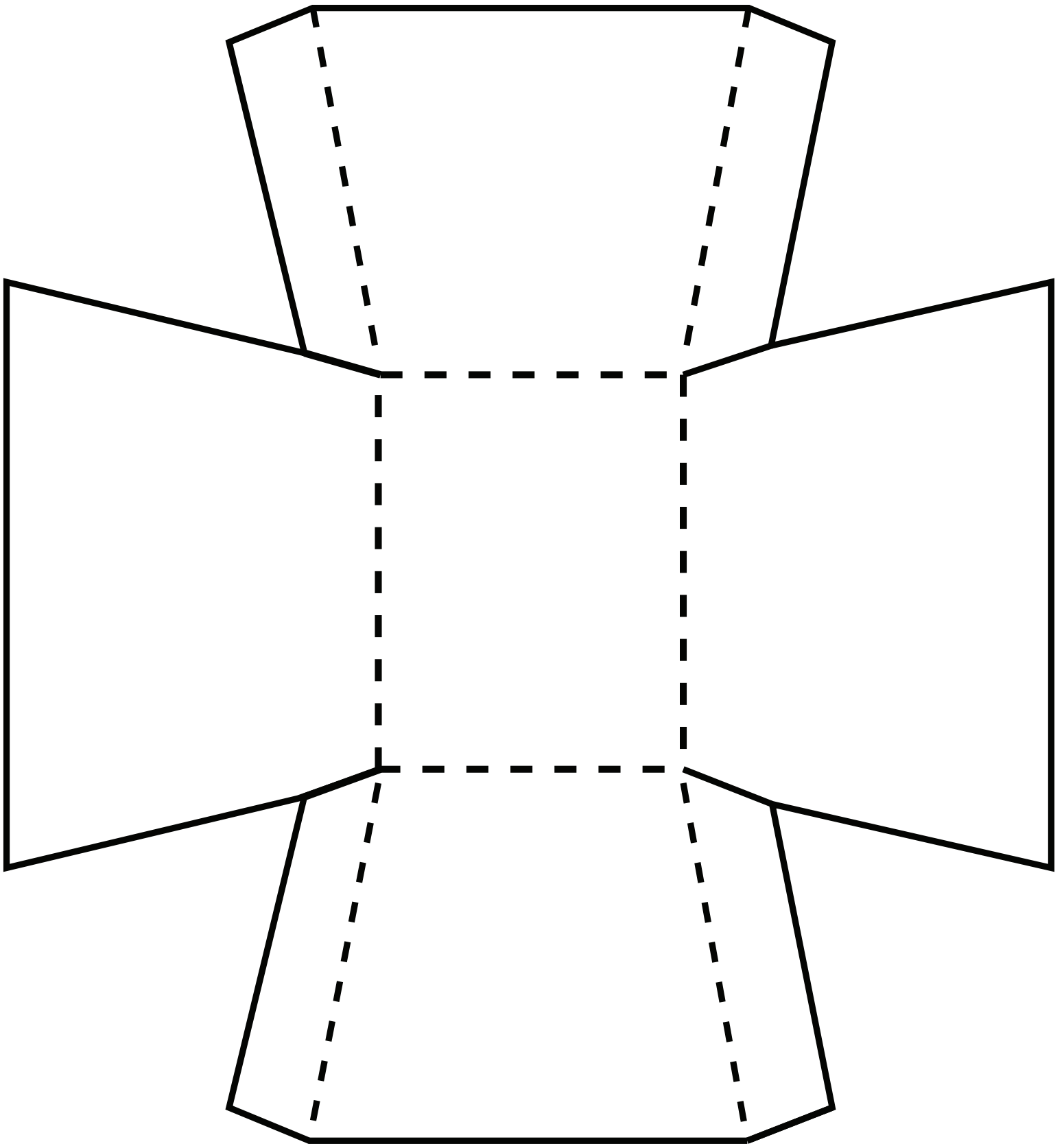
TRASH
BASURA

TRASH BIN
CONTENEDOR DE
BASURA



**MIXED
RECYCLING**
RECICLAJE MEZCLADO

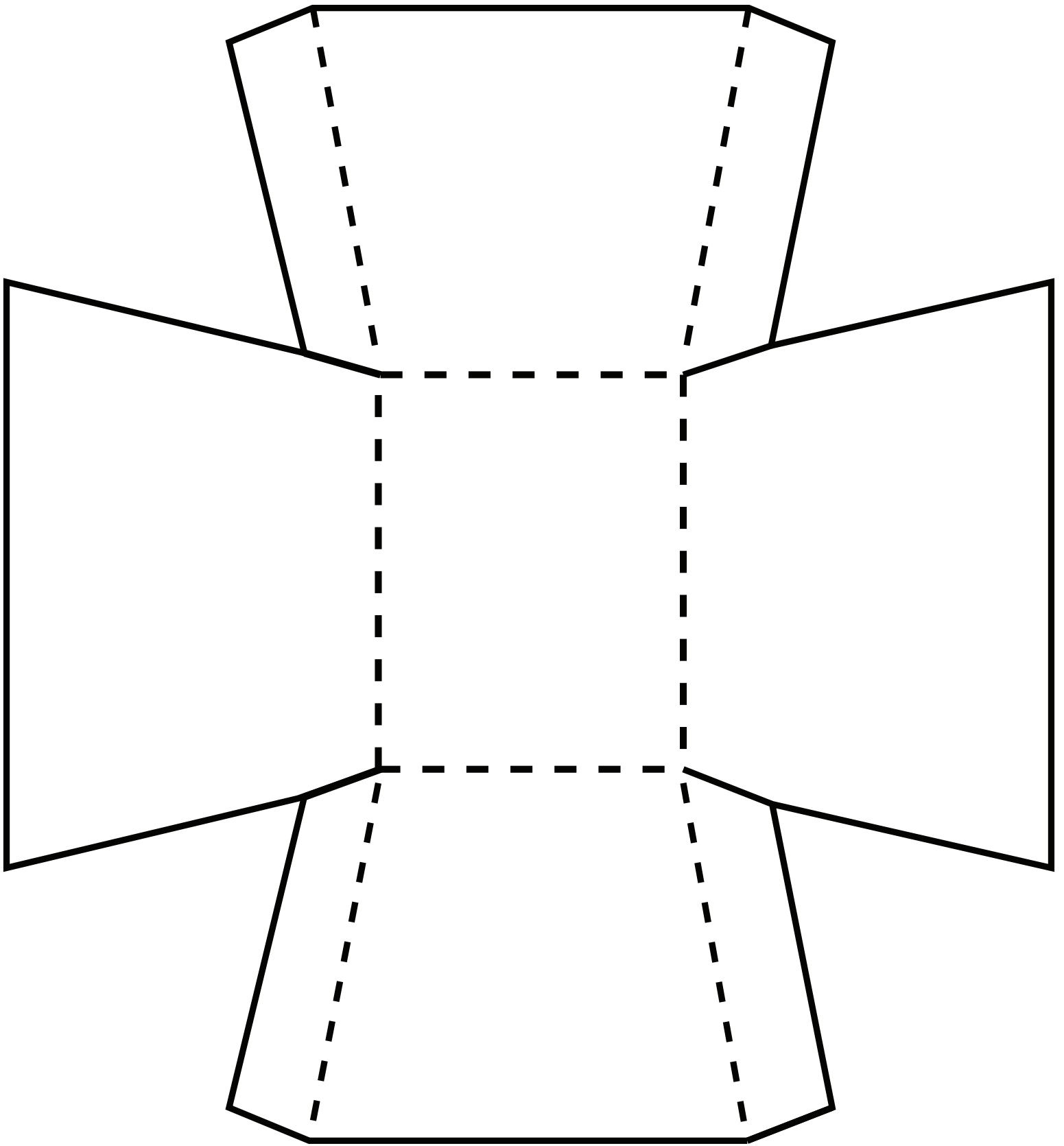
**RECYCLING
BIN**
CONTENEDOR
DE RECICLAJE
MEZCLADO



**HAZARDOUS
WASTE**

RESIDUOS
PELIGROSOS

**ECO-DEPOT
COLLECTION**
COLECCIÓN DE
"ECO-DEPOT"



PLASTIC
BAGS
AND FILM
BOLSAS Y ENVOLTURAS
PLÁSTICAS

TAKE BACK TO
ANY LARGE
RI STORE
DEVOLVER A TIENDAS
GRANDES EN RI