

WHAT GOES WHERE?



LEVEL 3 INSTRUCTIONS – Recommended for Grades 7+

GAME PIECES: 45 Cards, 6 Sorting Bins

OBJECT: Reduce the amount of waste you have to send to the landfill by accurately sorting items accepted in one or more of RI’s recycling and waste diversion programs.

PREPARATION:

- Cut out cards along dotted lines.
- Cut out sorting bins, cutting **ONLY** along all solid lines.
 - Fold along dotted lines.
 - Fold into a bin shape and tape side tabs.

PLAY:

STEP 1:

- Shuffle the cards and place them face down.

STEP 2: SORT MIXED RECYCLABLES

- Place the RECYCLING BIN in the center of the activity area.
- Review the SORTING GUIDELINES for MIXED RECYCLING.
- One at a time, flip over a card and decide if it meets Rhode Island’s recycling guidelines. State why it does or does not meet them. If it does, place the card in the RECYCLING BIN.

STEP 3: SORT HAZARDOUS WASTE

- Place the ECO-DEPOT COLLECTION bin in the center of the activity area.
- Review the SORTING GUIDELINES for HAZARDOUS WASTE.
- One at a time, flip over a card and decide if it meets Rhode Island’s household hazardous waste guidelines. State why it does or does not meet them. If it does, place the card in the ECO-DEPOT COLLECTION bin.

STEP 4: SORT PLASTIC BAGS AND FILM

- Place the TAKE BACK TO ANY LARGE RI STORE bin in the center of the activity area.
- Review the SORTING GUIDELINES for PLASTIC BAGS AND FILM.
- One at a time, flip over a card and decide if it meets Rhode Island’s plastic bag and film guidelines. State why it does or does not meet them. If it does, place the card in the TAKE BACK TO ANY LARGE RI STORE bin.

STEP 5: SORT COMPOST

- Place the BACKYARD COMPOST BIN in the center of the activity area.
- Review the SORTING GUIDELINES for COMPOST.

- One at a time, flip over a card and decide if it meets Rhode Island’s composting guidelines. State why it does or does not meet them. If it does, place the card in the BACKYARD COMPOST BIN.

STEP 6: SORT OTHER SPECIAL ITEMS

- Place the DROP-OFF OR SPECIAL COLLECTION bin in the center of the activity area.
- Review the SORTING GUIDELINES for OTHER SPECIAL ITEMS.
- One at a time, flip over a card and decide if it meets Rhode Island’s guidelines for OTHER SPECIAL ITEMS. If it does, place the card in the DROP-OFF OR SPECIAL COLLECTION bin.
- Place the remaining cards in the TRASH BIN. Check the ANSWER KEY to see if the items in the RECYCLING BIN, ECO-DEPOT COLLECTION bin, TAKE BACK TO ANY LARGE RI STORE bin, BACKYARD COMPOST BIN, DROP-OFF OR SPECIAL COLLECTION bin and TRASH BIN are sorted correctly.

STEP 7: DISCUSSION

- What percentage of the items you sorted don’t need to go in the trash?
 - Extend the discussion: Review RI’s most recent waste characterization pie chart and discuss the potential we have, as a state, to keep more items out of the landfill. You can find the most recent “Waste Characterization **Graphic**” at <http://www.rirrc.org/about/reports-data/planning>.
- Look in the trash and/or recycling bins in your classroom or in your school.
 - Are there any items in the trash that should go in the recycling?
 - Are there any items in the recycling that should go in the trash?
 - Homework: Repeat this at home tonight.
- What do you think the effect of putting items in the correct bins, instead of just putting them all in the trash bin, could have on the landfill?
- What do you think the effect of putting items in the wrong bins could have? For example, what do you think happens at the Materials Recycling Facility (MRF) when you put items in the recycling bin that don’t belong there?
 - Extend the discussion: Watch these two videos and discuss whether they changed your perception of why proper sorting is important.
 - <https://www.youtube.com/watch?v=83sYHe3jdGA>
 - https://www.youtube.com/watch?v=YZAz2d_QKEI

WHAT GOES WHERE? LEVEL 3 SORTING GUIDELINES

Recycling right and setting aside other items for special collection programs reduces the amount of trash that must be buried in Rhode Island's landfill. Follow these guidelines to accurately sort out items accepted in RI's (1) mixed recycling, (2) hazardous waste, (3) plastic bag and film, (4) compost, and (5) other special collection programs, and place them in the correct bins instead of the TRASH BIN.

MIXED RECYCLING	<p>Place these items in the RECYCLNG BIN:</p> <p>Fiber: Paper, cardboard (flattened) and cartons ONLY</p> <ul style="list-style-type: none"> • <i>Exceptions: No paper shreds, napkins, tissues, or paper towels</i> <p>Metal: Cans, lids, and foil ONLY</p> <p>Glass: Bottles and jars ONLY</p> <p>Plastic: Containers ONLY</p> <ul style="list-style-type: none"> • <i>Exceptions: No foam containers and no containers from flammable materials or oily chemicals</i>
HAZARDOUS WASTE	<p>Bring these items to an ECO-DEPOT COLLECTION event:</p> <p>Anything that is flammable, combustible, corrosive, toxic, or poisonous</p>
PLASTIC BAGS AND FILM	<p>Collect these items to TAKE BACK TO ANY LARGE RI STORE:</p> <p>Clean and dry bags and film that can stretch (even just a little!)</p>
COMPOST	<p>Place these items in a BACKYARD COMPOST BIN:</p> <p>Things that would decompose or break down quickly in a compost pile</p>
OTHER SPECIAL ITEMS	<p>Bring these items to a DROP-OFF OR SPECIAL COLLECTION location:</p> <p>Thing you may be able to drop-off or have picked up by your city or town or another drop-off center</p>

After completing the game, see the ANSWER KEY to find out if you've sorted the cards correctly.

INTENTIONALLY LEFT BLANK

WHAT GOES WHERE? LEVEL 3 ANSWER KEY

BINS	CARDS
TRASH	
MIXED RECYCLING	
HAZARDOUS WASTE	
PLASTIC BAGS AND FILM	
COMPOST	
OTHER SPECIAL ITEMS	

INTENTIONALLY LEFT BLANK



WHAT GOES WHERE?

¿A DÓNDE VA?

www.rirrc.org



WHAT GOES WHERE?

¿A DÓNDE VA?

www.rirrc.org



WHAT GOES WHERE?

¿A DÓNDE VA?

www.rirrc.org



WHAT GOES WHERE?

¿A DÓNDE VA?

www.rirrc.org



WHAT GOES WHERE?

¿A DÓNDE VA?

www.rirrc.org



WHAT GOES WHERE?

¿A DÓNDE VA?

www.rirrc.org



WHAT GOES WHERE?

¿A DÓNDE VA?

www.rirrc.org



WHAT GOES WHERE?

¿A DÓNDE VA?

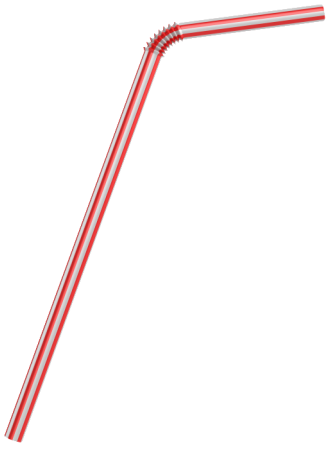
www.rirrc.org



WHAT GOES WHERE?

¿A DÓNDE VA?

www.rirrc.org



plastic straw

pajita plástica / sorbete plástico



wrappers

envoltorios / envolturas



plastic utensils

utensilios plásticos



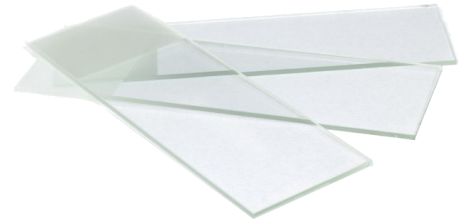
foam cup

vaso de espuma



motor oil bottle

botella de aceite para motor



microscope slides

diapositivas para microscopio



wooden box

caja de madera



paper

papel



cardboard

cartón



WHAT GOES WHERE?

¿A DÓNDE VA?

www.rirrc.org



WHAT GOES WHERE?

¿A DÓNDE VA?

www.rirrc.org



WHAT GOES WHERE?

¿A DÓNDE VA?

www.rirrc.org



WHAT GOES WHERE?

¿A DÓNDE VA?

www.rirrc.org



WHAT GOES WHERE?

¿A DÓNDE VA?

www.rirrc.org



WHAT GOES WHERE?

¿A DÓNDE VA?

www.rirrc.org



WHAT GOES WHERE?

¿A DÓNDE VA?

www.rirrc.org



WHAT GOES WHERE?

¿A DÓNDE VA?

www.rirrc.org



WHAT GOES WHERE?

¿A DÓNDE VA?

www.rirrc.org



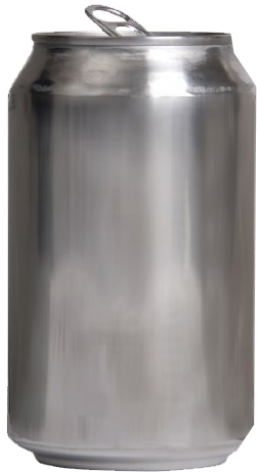
soup carton
cartón de sopa



milk carton
cartón de leche



juice box
cartón de jugo



beverage can
lata de bebida



food can
lata de comida



metal lid
tapa de metal



aluminum foil
papel aluminio



juice bottle
botella de jugo



shampoo bottle
botella de champú



WHAT GOES WHERE?

¿A DÓNDE VA?

www.rirrc.org



WHAT GOES WHERE?

¿A DÓNDE VA?

www.rirrc.org



WHAT GOES WHERE?

¿A DÓNDE VA?

www.rirrc.org



WHAT GOES WHERE?

¿A DÓNDE VA?

www.rirrc.org



WHAT GOES WHERE?

¿A DÓNDE VA?

www.rirrc.org



WHAT GOES WHERE?

¿A DÓNDE VA?

www.rirrc.org



WHAT GOES WHERE?

¿A DÓNDE VA?

www.rirrc.org



WHAT GOES WHERE?

¿A DÓNDE VA?

www.rirrc.org



WHAT GOES WHERE?

¿A DÓNDE VA?

www.rirrc.org



water bottle
botella de agua



yogurt cup
vaso de yogur



plastic take-out container
contenedor plástico para
comida de llevar



iced coffee cup
vaso para café frío



bug spray
repelente del insecto



bleach
blanqueador / cloro



poison
veneno



nail polish
esmalte para las uñas



gasoline
gasolina



WHAT GOES WHERE?

¿A DÓNDE VA?

www.rirrc.org



WHAT GOES WHERE?

¿A DÓNDE VA?

www.rirrc.org



WHAT GOES WHERE?

¿A DÓNDE VA?

www.rirrc.org



WHAT GOES WHERE?

¿A DÓNDE VA?

www.rirrc.org



WHAT GOES WHERE?

¿A DÓNDE VA?

www.rirrc.org



WHAT GOES WHERE?

¿A DÓNDE VA?

www.rirrc.org



WHAT GOES WHERE?

¿A DÓNDE VA?

www.rirrc.org



WHAT GOES WHERE?

¿A DÓNDE VA?

www.rirrc.org



WHAT GOES WHERE?

¿A DÓNDE VA?

www.rirrc.org



bubble wrap
plástico de burbujas



air packs
bolsas de aire



plastic envelope
envoltura de plástico



sandwich bag
bolsa para sándwich



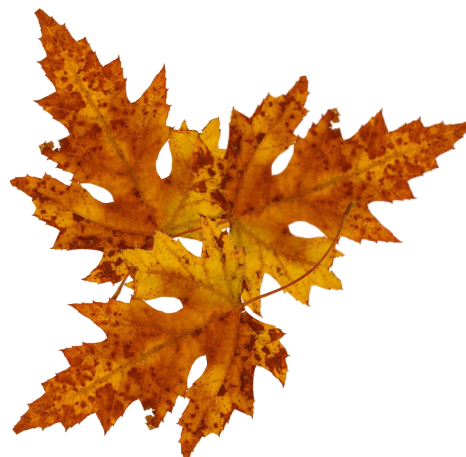
produce bag
bolsa para verduras y frutas



plastic bag
bolsa plástica



banana
banana



leaves
hojas



coffee grounds
granos del café



WHAT GOES WHERE?

¿A DÓNDE VA?

www.rirrc.org



WHAT GOES WHERE?

¿A DÓNDE VA?

www.rirrc.org



WHAT GOES WHERE?

¿A DÓNDE VA?

www.rirrc.org



WHAT GOES WHERE?

¿A DÓNDE VA?

www.rirrc.org



WHAT GOES WHERE?

¿A DÓNDE VA?

www.rirrc.org



WHAT GOES WHERE?

¿A DÓNDE VA?

www.rirrc.org



WHAT GOES WHERE?

¿A DÓNDE VA?

www.rirrc.org



WHAT GOES WHERE?

¿A DÓNDE VA?

www.rirrc.org



WHAT GOES WHERE?

¿A DÓNDE VA?

www.rirrc.org



shredded paper
trozos de papel



egg shell
cáscara del huevo



napkin
servilleta



grass clippings
recortes de césped



sock
calcetín / media



hardcover book
libro con una tapa dura



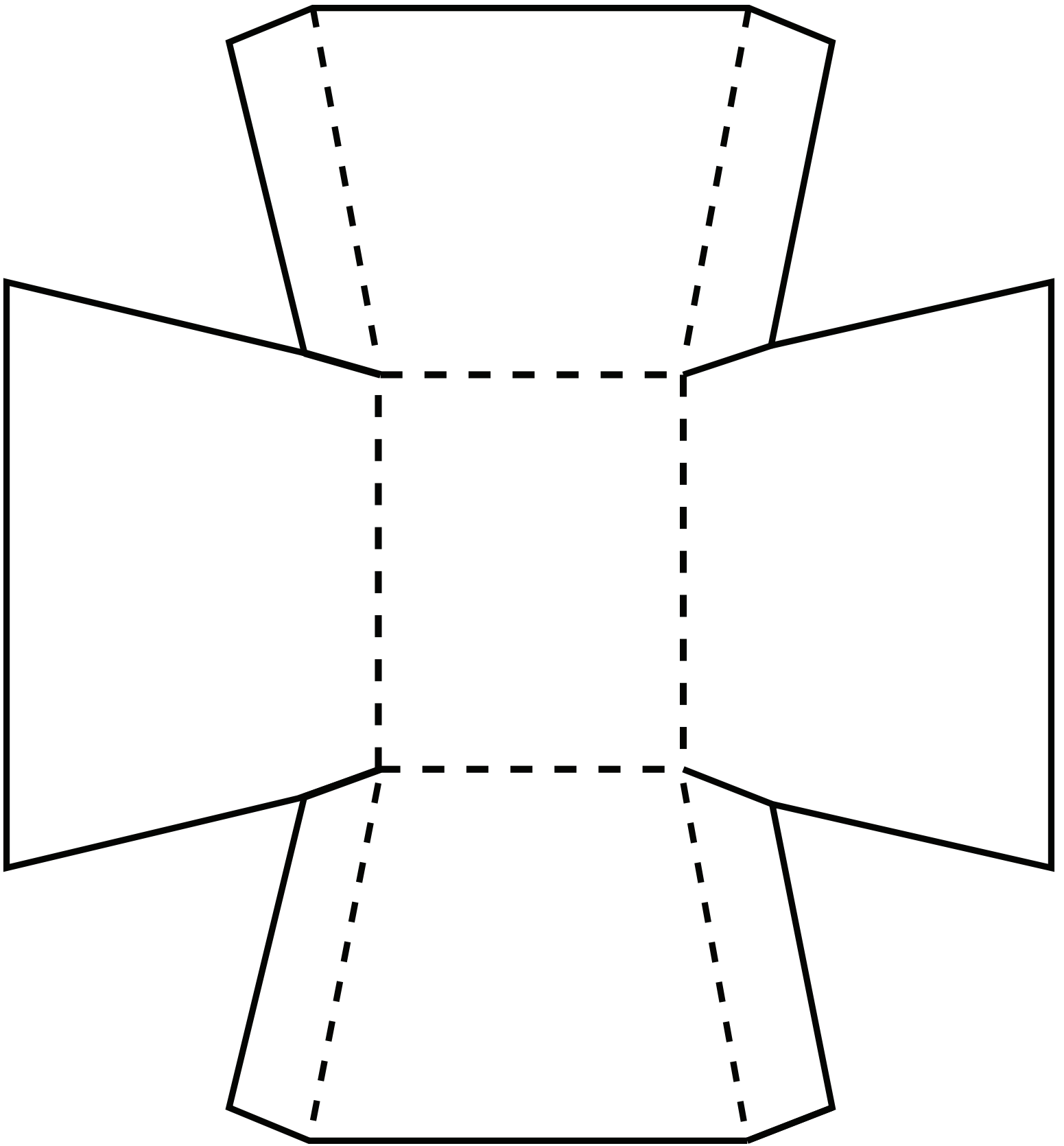
mattress
colchón



computer
computadora



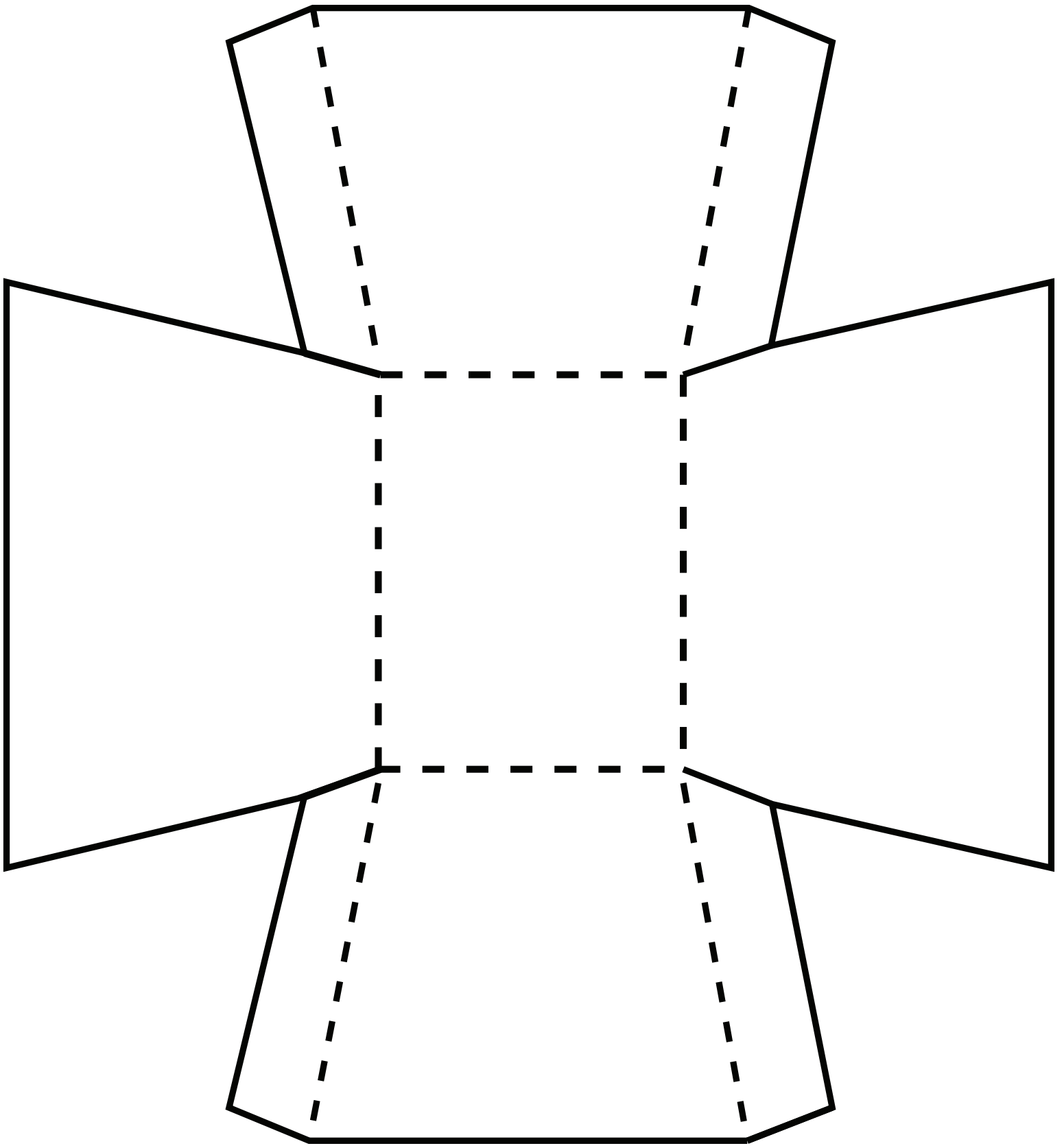
frying pan
sartén





TRASH
BASURA

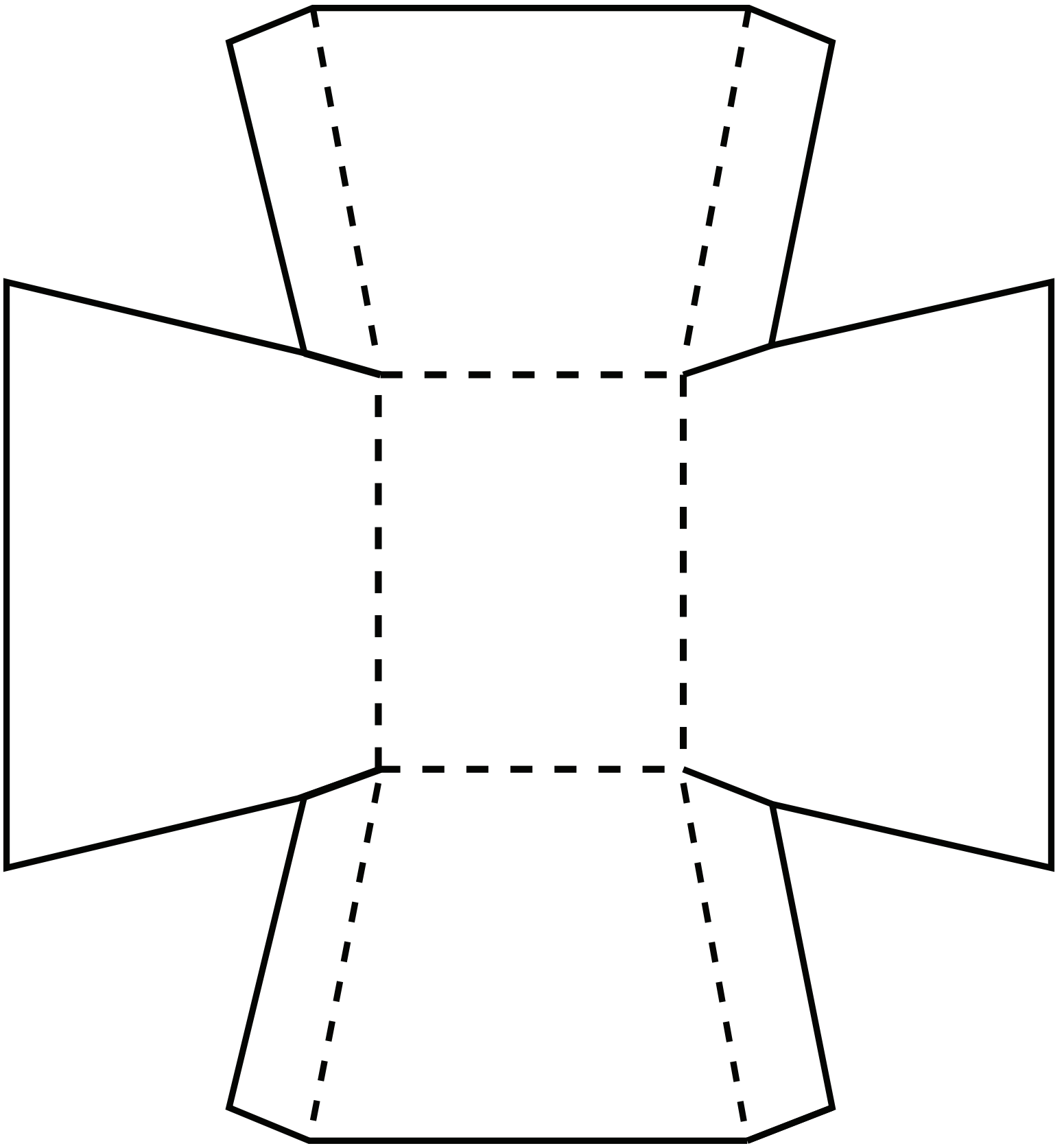
TRASH BIN
CONTENEDOR DE
BASURA





**MIXED
RECYCLING**
RECICLAJE MEZCLADO

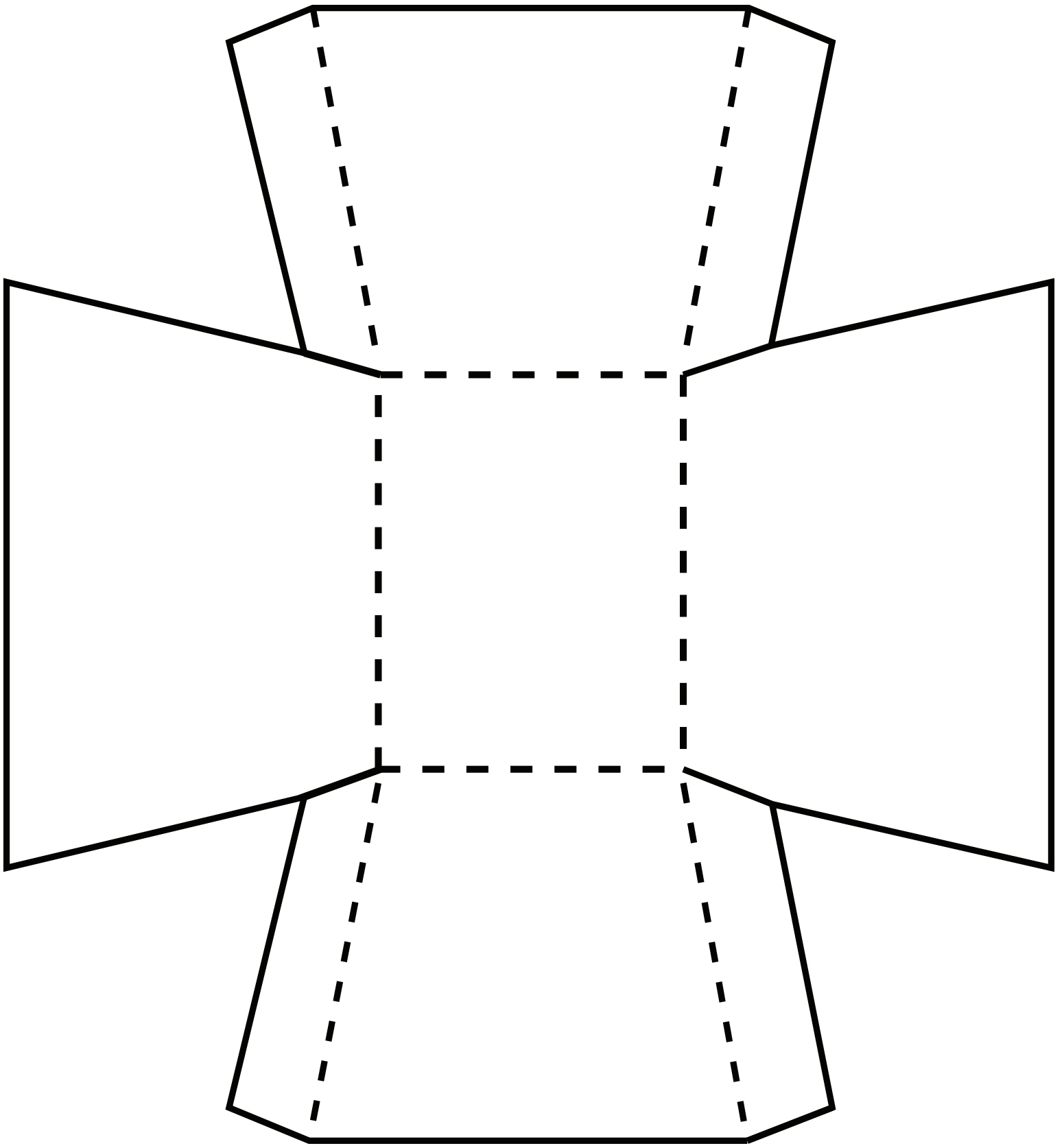
**RECYCLING
BIN**
CONTENEDOR
DE RECICLAJE
MEZCLADO



**HAZARDOUS
WASTE**

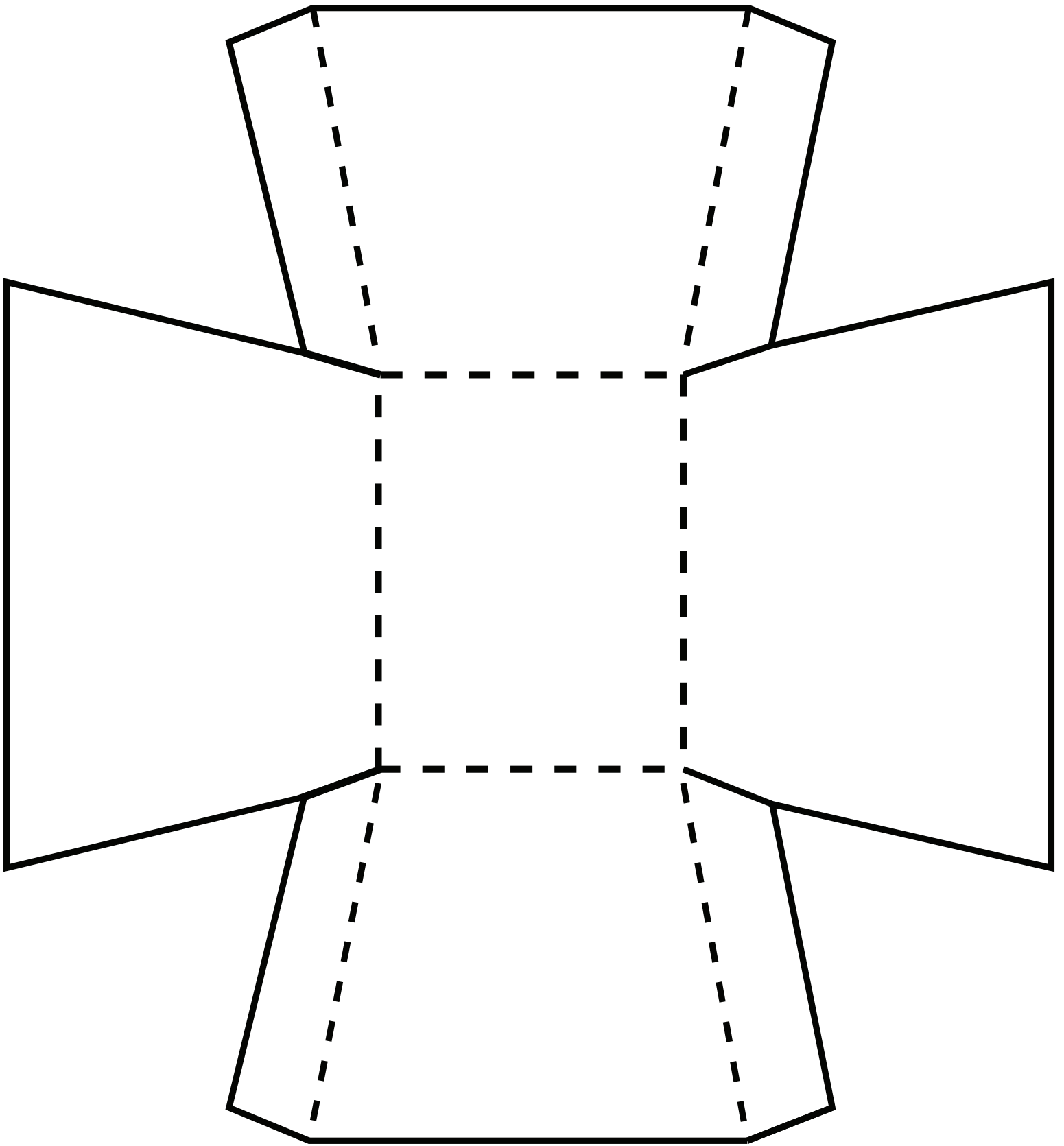
RESIDUOS
PELIGROSOS

**ECO-DEPOT
COLLECTION**
COLECCIÓN DE
"ECO-DEPOT"



PLASTIC
BAGS
AND FILM
BOLSAS Y ENVOLTURAS
PLÁSTICAS

TAKE BACK TO
ANY LARGE
RI STORE
DEVOLVER A TIENDAS
GRANDES EN RI

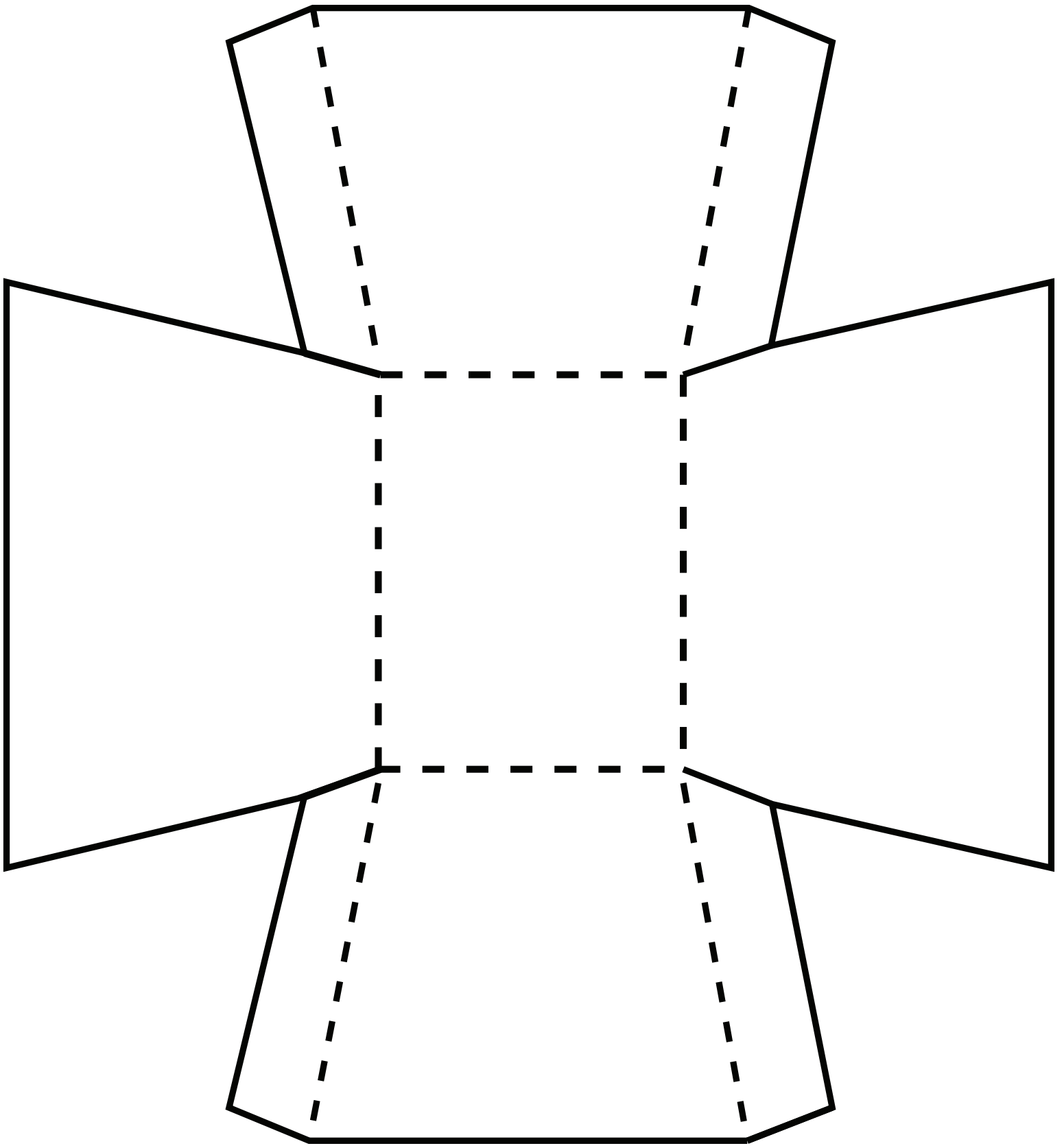


**BACKYARD
COMPOST**

BIN

RECIPIENTE DE
COMPOSTAJE
PARA EL PATIO

COMPOST
COMPOSTAJE



OTHER
SPECIAL
ITEMS

OTROS ARTÍCULOS
ESPECIALES

DROP-OFF
OR SPECIAL
COLLECTION
CENTRO DE ENTREGA
O COLECCIÓN ESPECIAL